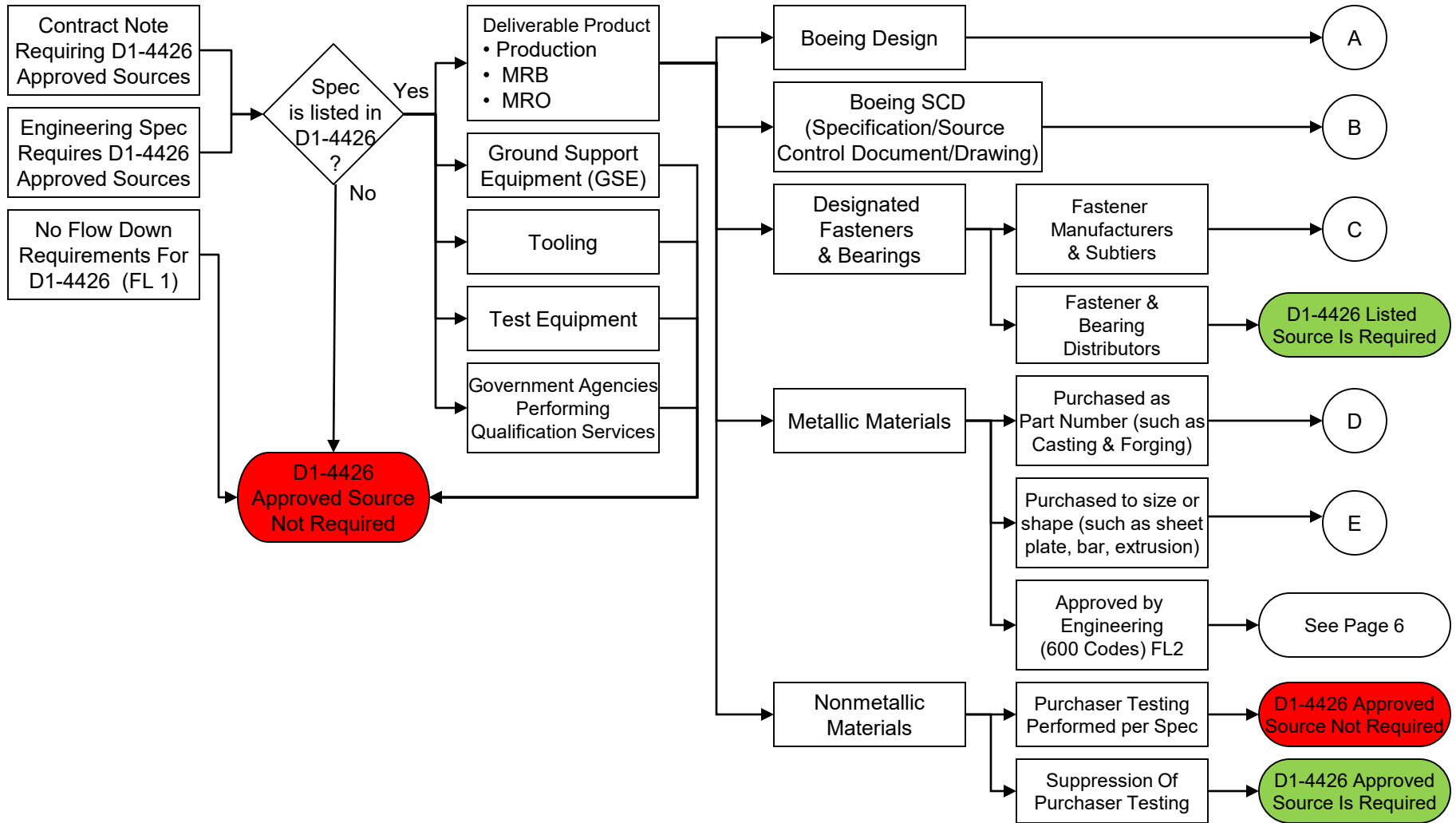


D1-4426 Approved Sources Flow Chart



FL 1 = Processor to perform due diligence to ensure purchase order is correct.

FL 2 = BCA and C-17 only. Metallic material sources for non-USA suppliers and all suppliers of Titanium ingot (i.e. non-USA and USA) in accordance with D042T601 and DMS2201

D1-4426 Approved Sources Matrix

(✓ Indicates Approved Source Required)

		A	B	C	D	E
	Standard Type (FL 1) Or Service	Boeing Design	Boeing SCD (FL 5)	Designated Fasteners	Metallic Materials (Parts Numbers)	Metallic Materials (Size & Shape)
Process Specifications	Boeing	✓	✓	✓	✓	✓
	Industry/Military	✓	FL 3		✓	FL 4
Support Test Methods (FL 2)	Boeing	✓	✓		✓	✓
	Industry/Military	✓	FL 3		✓	FL 4

FL 1 – An industry/military standard is published outside The Boeing Company (including ASTM, MIL-STD, AMS, PRC etc.):

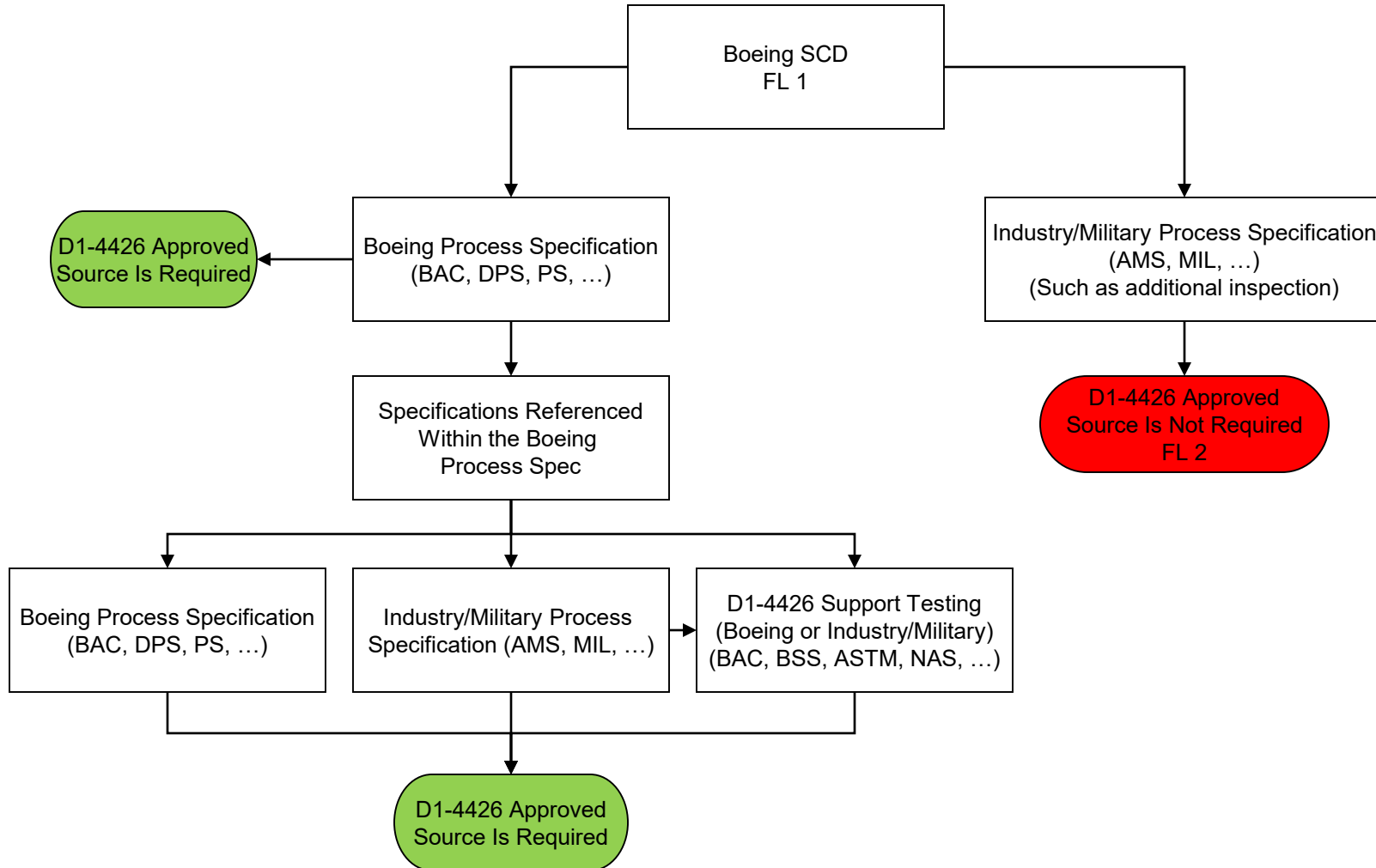
FL 2 – Support Test Methods (800 Codes) must be referenced and performed in support of another required D1-4426 standard

FL 3 – Approved sources required when flowed from a Boeing process standard called out in the Supplier Design/SCD

FL 4 – Approved sources required when flowed from a Boeing process standard called out in the raw material standard

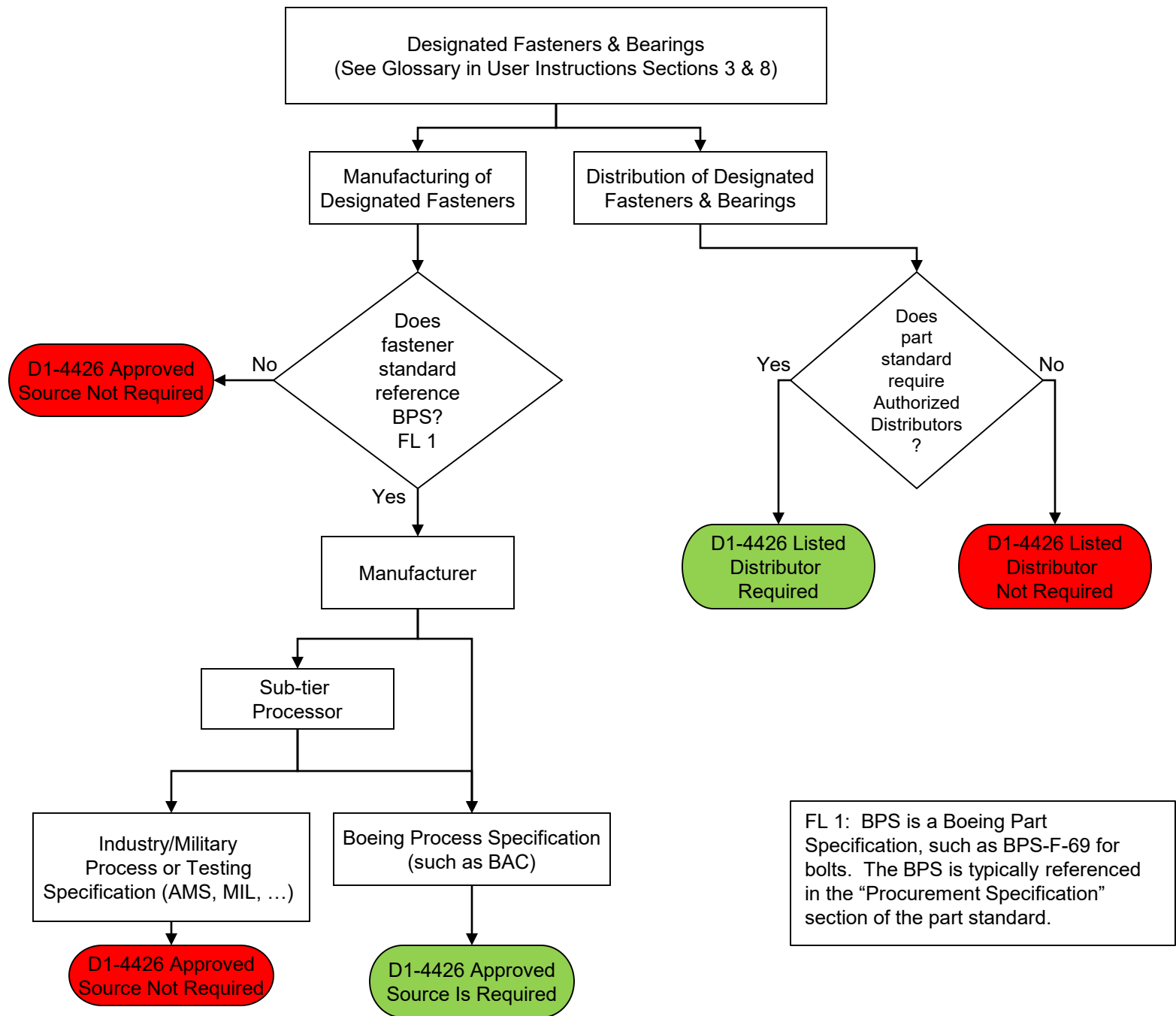
FL 5 - D1-4426 approval is required for processing of critical bearings and clutches when D210-10302-1 ("Control Requirements for Critical Bearings and Clutches") is referenced on the SCD.

Boeing Specification/Source Control Document/Drawing (SCD)



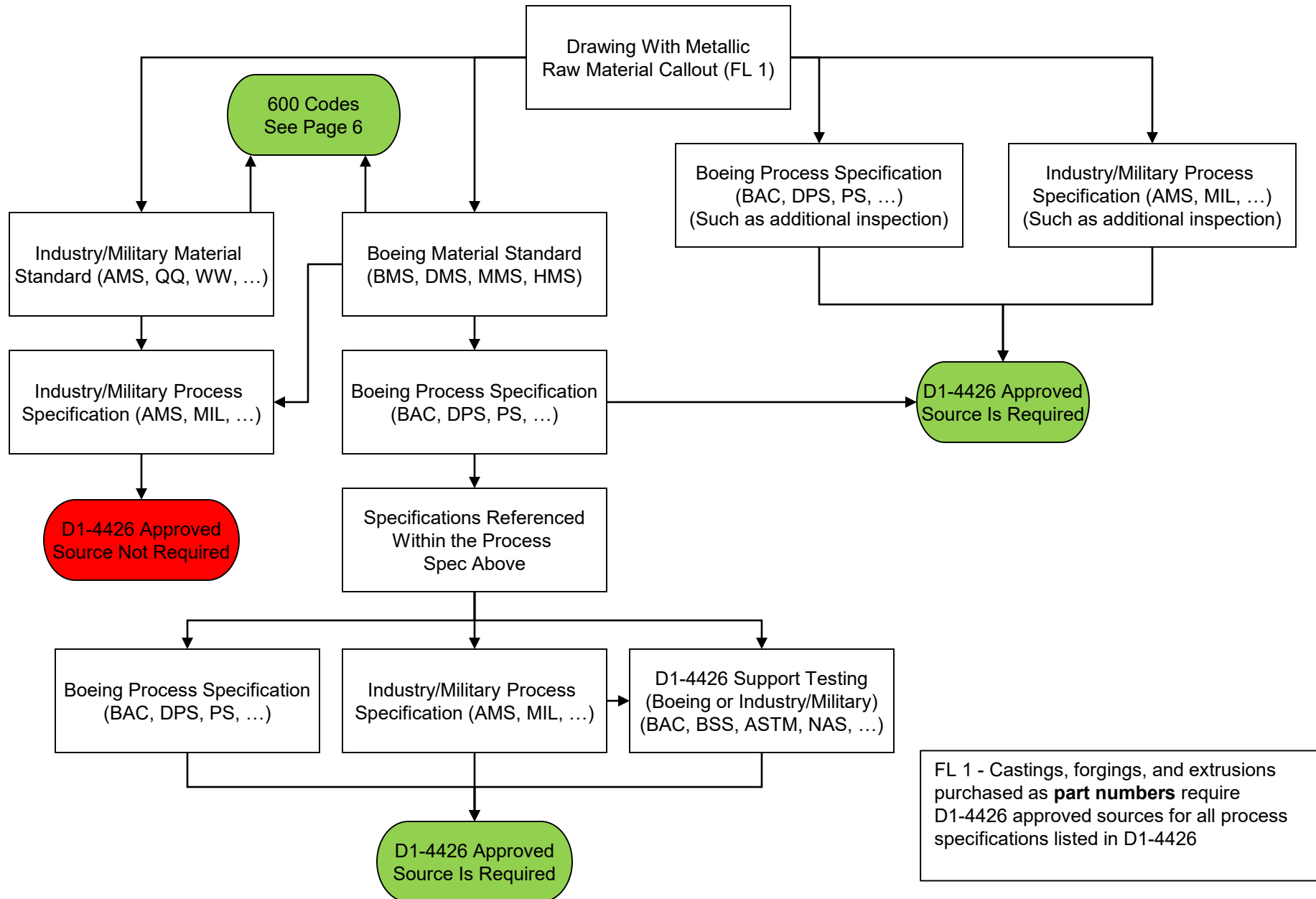
FL 1: D1-4426 approval is required for processing of critical bearings and clutches when D210-10302-1 ("Control Requirements for Critical Bearings and Clutches") is referenced on the SCD.

FL 2: Nadcap accreditation may be required in accordance with Boeing Engineering SCD requirements documents (such as D6-53172 or D620Z414-01)



Metallic Raw Materials

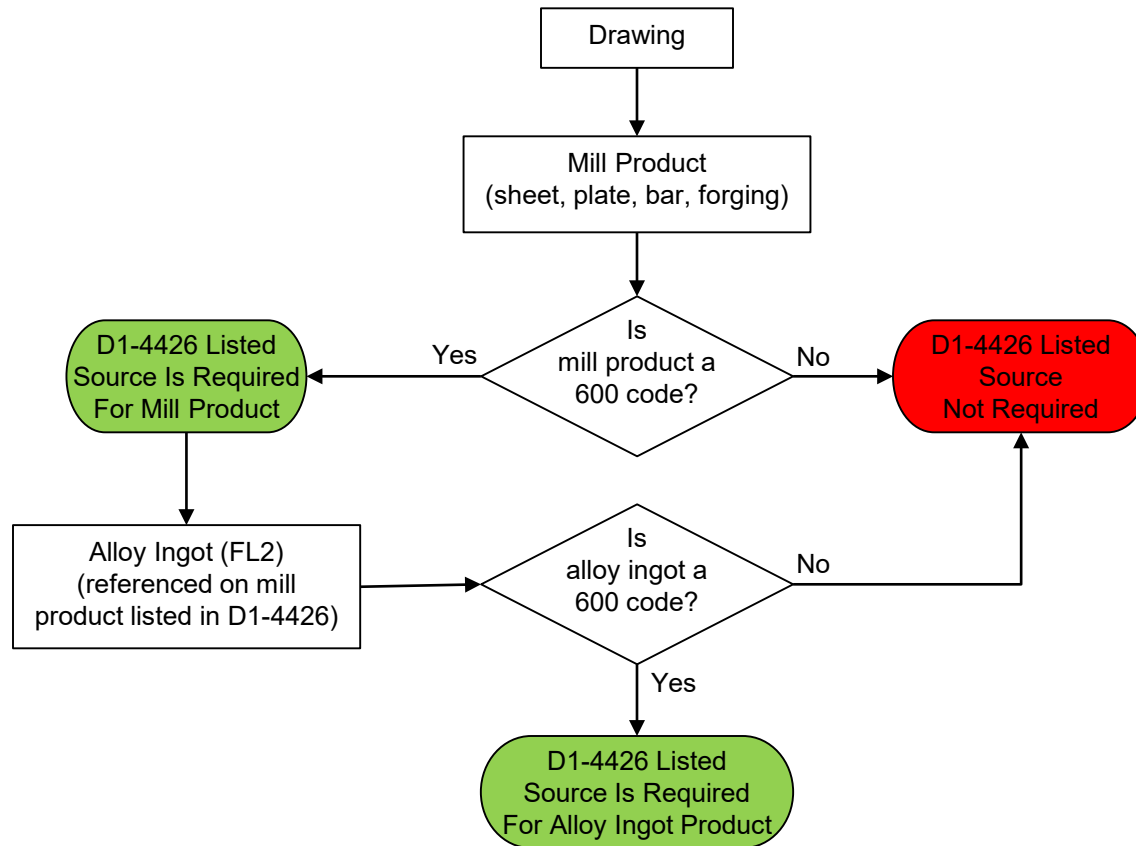
Purchased to size or shape (such as sheet plate, bar, extrusion) FL1



600 Codes

Metallic Materials Requiring Boeing Engineering Approval

Applicable to non-U.S.A. raw material suppliers and all titanium alloy ingot suppliers (non-U.S.A. and U.S.A.) for Boeing Commercial Airplane products excluding Long Beach Division (FL1)



FL1 – Metallic materials in accordance with D042T601 (*Requirements for Engineering Approval of Metallic Raw Material Suppliers*) and DMS2201 (*Procurement from Foreign Sources - Metallic Raw Materials*)

FL2 – If the mill product is **not** listed in D1-4426, then any satisfactory source may be used for alloy ingot (regardless if the alloy ingot is listed in D1-4426)